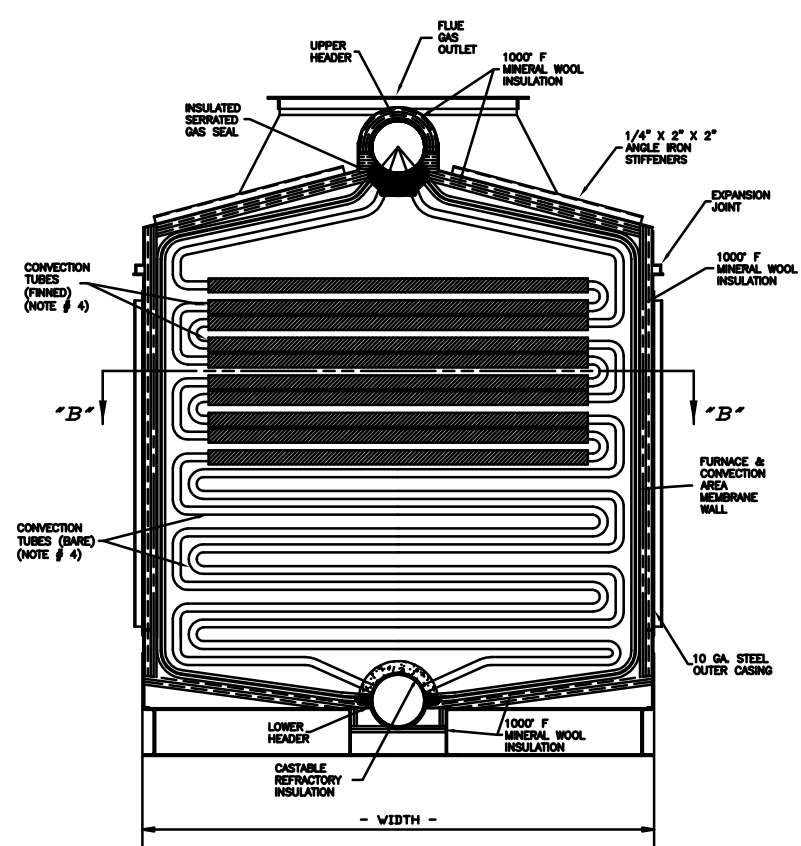
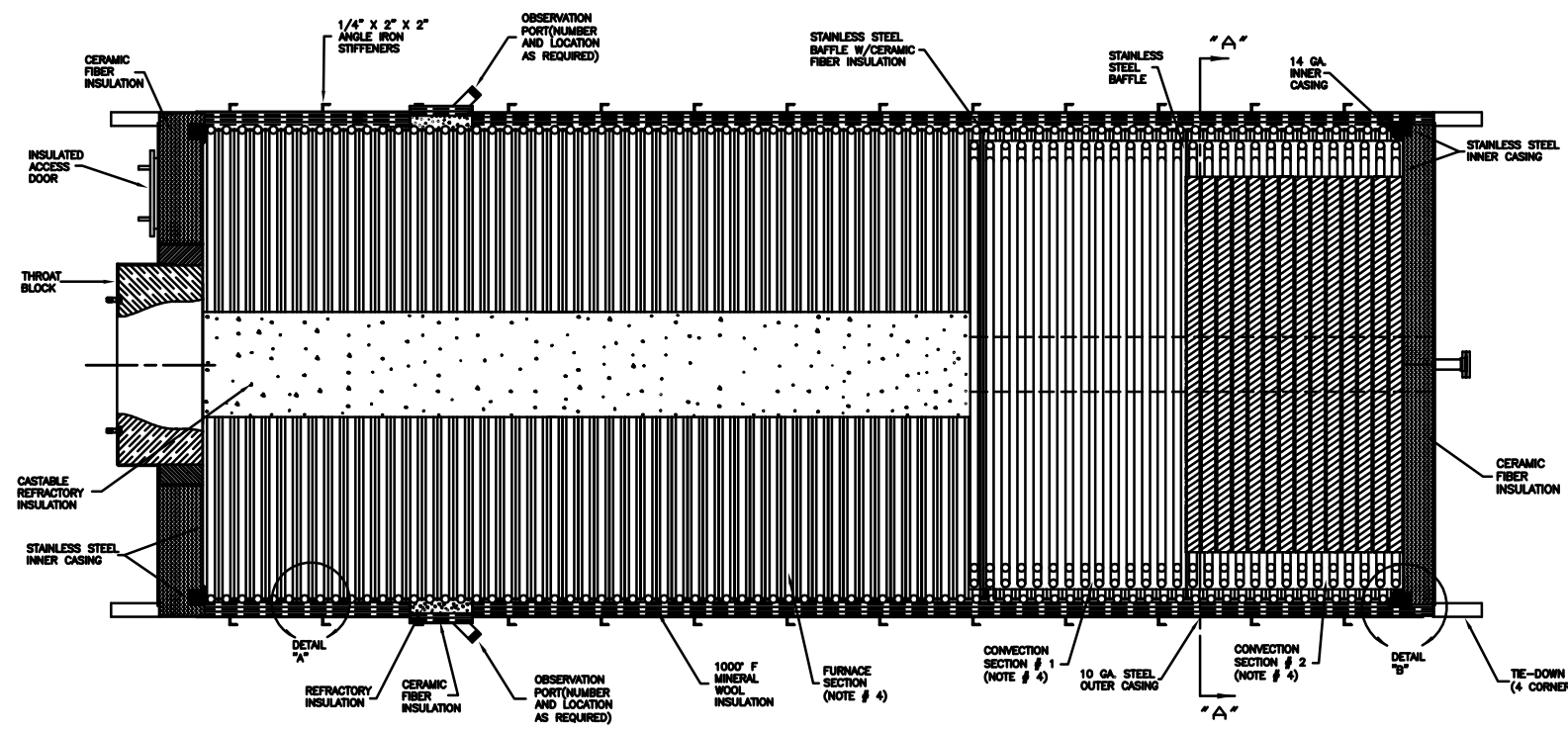


DO NOT SCALE - USE DIMENSIONS ONLY
 DO NOT USE FOR CONSTRUCTION UNLESS APPROVED BELOW
 THIS DRAWING IS THE PROPERTY OF CB NEBRASKA BOILER AND IS LOANED ON CONDITION THAT IT SHALL NOT BE COPIED OR REPRODUCED IN WHOLE OR IN PART OR DISCLOSED TO ANY THIRD PARTY OR USED IN ANY WAY WITHOUT THE WRITTEN CONSENT OF CB NEBRASKA BOILER. ANY EQUIPMENT OR MATERIAL SHOWN, BUT NOT FURNISHED BY CB NEBRASKA BOILER, IS FOR ILLUSTRATING THE APPLICATION, AND CB NEBRASKA BOILER ACCEPTS NO RESPONSIBILITY AS TO INSTALLATION OR OPERATION OF SUCH EQUIPMENT OR MATERIALS.

REV.	DATE	DESCRIPTION	DWN	CHK	APPR

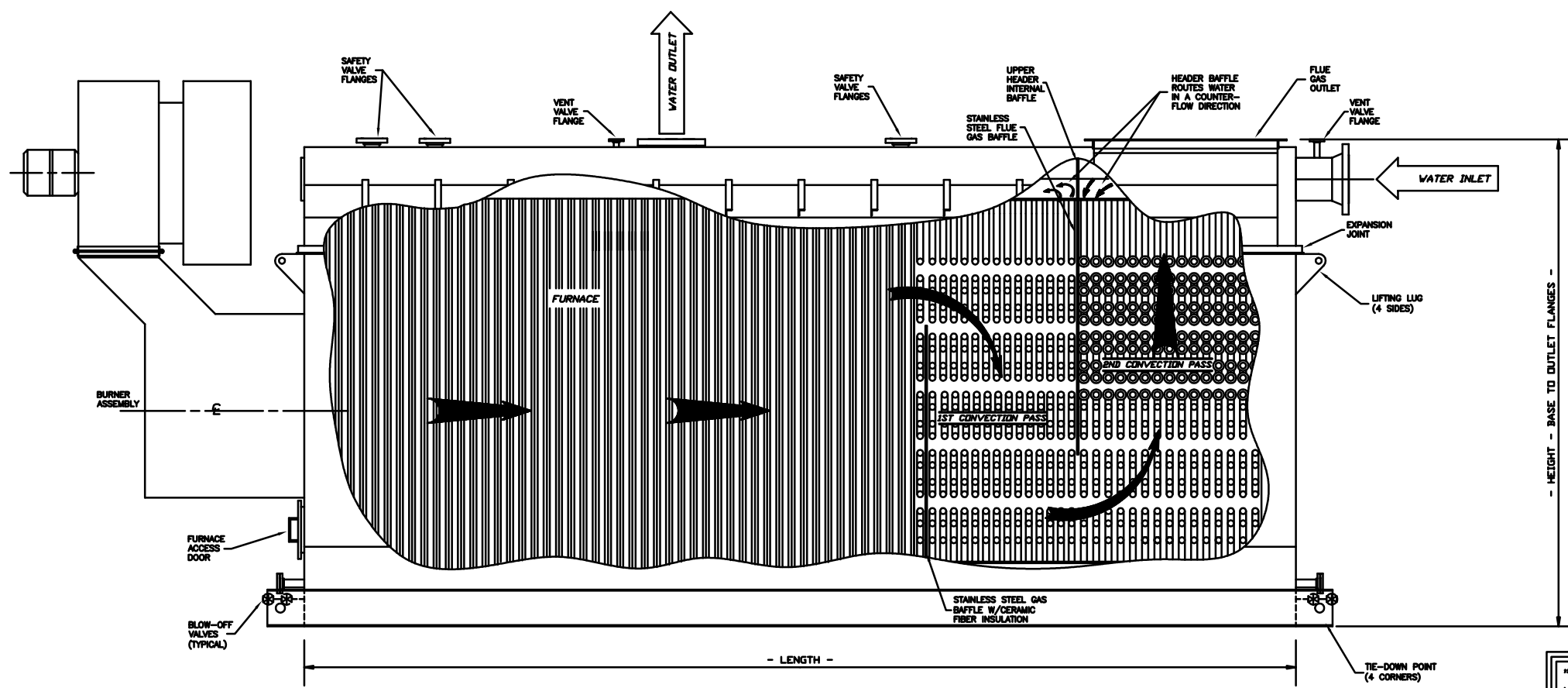


VERTICAL SECTION "A"- "A"



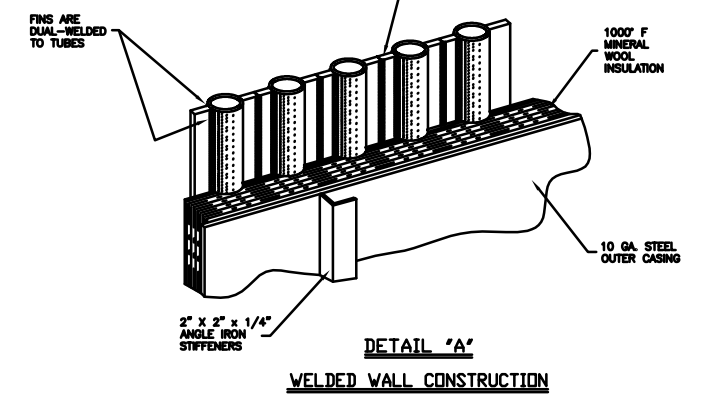
HORIZONTAL SECTION "B"- "B"

- NOTES:
1. BOILER CONSTRUCTION IS PER THE LATEST EDITION OF THE A.S.M.E. BOILER CODE, SECTION 1.
 2. CASING IS SEAL WELDED FOR PRESSURE TIGHT CONSTRUCTION.
 3. CASING EXPANSION JOINTS PROVIDED TO ALLOW STRESS FREE EXPANSION OF UNIT PRESSURE PARTS.
 4. NUMBER OF TUBES IN FURNACE AREA AND IN EACH ROW OF CONVECTION SECTION ARE FOR ILLUSTRATING PURPOSES ONLY AND WILL CHANGE WITH REQUIREMENTS OF FURNACE TEMPERATURE AND FLUID INLET AND OUTLET TEMPERATURES.

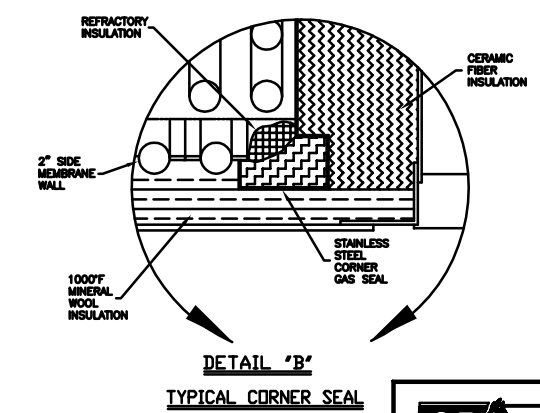


SIDE ELEVATION
 PARTIAL SECTION: "C"- "C"

ADJACENT FINS OF ALL FURNACE, AND OUTSIDE CONVECTION TUBES ARE CONTINUOUSLY SEAL WELDED TO FORM A PRESSURE TIGHT - WATER COOLED PANEL



DETAIL "A"
 WELDED WALL CONSTRUCTION



DETAIL "B"
 TYPICAL CORNER SEAL

"THIS DRAWING IS A REPRESENTATION OF VARIOUS MODELS OF THE CB NEBRASKA BOILER "MAX-FLOW" MODEL HOT WATER GENERATOR. NUMBERS AND SPACINGS OF TUBES, AND BURNER OPENINGS WILL VARY." THIS DRAWING IS A PICTORIAL VIEW FOR CUSTOMER CONVENIENCE AND INFORMATION. SOME RECENT MANUFACTURING ADVANCES MAY NOT BE SHOWN.

CB NEBRASKA BOILER
The power of commitment.

GENERAL ARRANGEMENT SERIES:
 MAX-FLOW® MODEL **...**
 ** MM/BTU HOT WATER GENERATOR

LAYOUT DRAWING FOR
 HOT WATER GENERATOR

SCALE: NONE	DATE: MAY 11, 2007
DRAWN BY: KENB	CHECKED:
JOB NO: PROPOSAL	SERIAL NO:
QTY:	DRAWING NO: NHTHWS-2