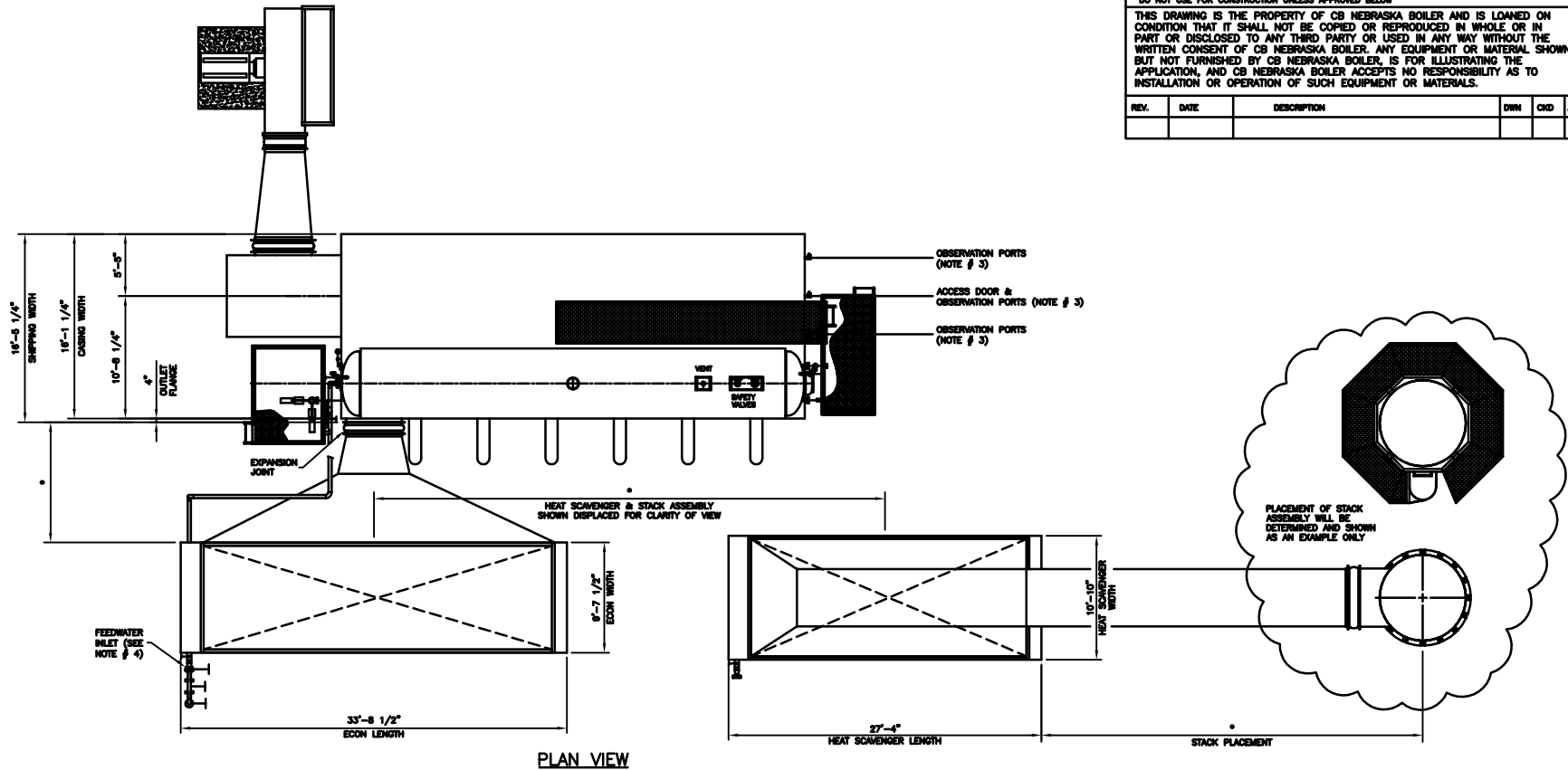


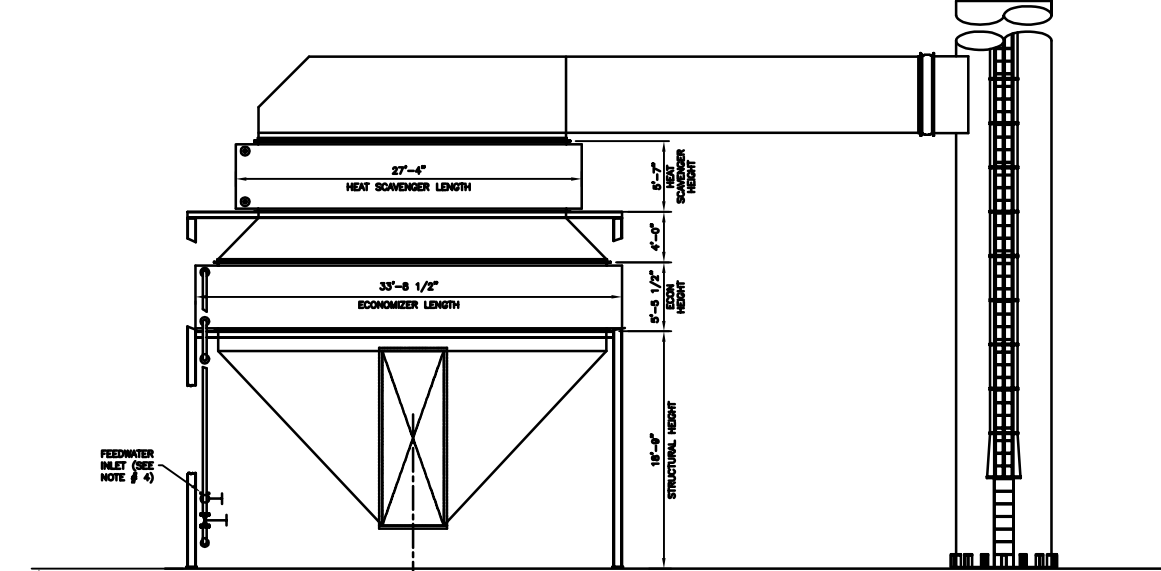
NOTES:

1. DRAWING IS FOR OVERALL SIZE AND ARRANGEMENT ONLY. REFER TO PROPOSAL FOR TRIM LIST.
2. DRAWING IS NOT TO BE USED FOR CONSTRUCTION PURPOSES.
3. * - DENOTES TO BE DETERMINED. NUMBER AND SIZE OF OBSERVATION PORTS TO BE DETERMINED.
4. LOCATION AND SIZING OF VALVES AND PIPING IS SHOWN AS A REPRESENTATION ONLY, AND WILL BE DETERMINED UPON FINAL ENGINEERING.
5. LADDERS AND PLATFORMS ARE SHOWN AS A REPRESENTATION ONLY, AND WILL BE BUILT TO OSHA STANDARDS WITH REQUIRED ACCESS TO BOILER AND COMPONENTS PER PROPOSAL BID PRICING.

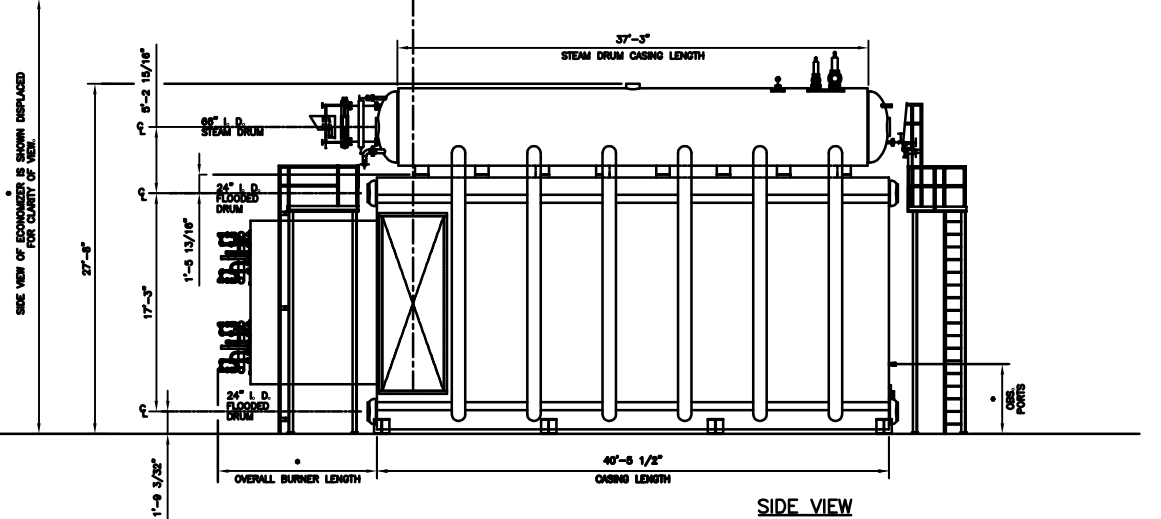
DO NOT SCALE - USE DIMENSIONS ONLY		NOT B.O. INDICATED NOT FURNISHED BY CB NB			
DO NOT USE FOR CONSTRUCTION UNLESS APPROVED BELOW					
THIS DRAWING IS THE PROPERTY OF CB NEBRASKA BOILER AND IS LOANED ON CONDITION THAT IT SHALL NOT BE COPIED OR REPRODUCED IN WHOLE OR IN PART OR DISCLOSED TO ANY THIRD PARTY OR USED IN ANY WAY WITHOUT THE WRITTEN CONSENT OF CB NEBRASKA BOILER. ANY EQUIPMENT OR MATERIAL SHOWN, BUT NOT FURNISHED BY CB NEBRASKA BOILER, IS FOR ILLUSTRATING THE APPLICATION, AND CB NEBRASKA BOILER ACCEPTS NO RESPONSIBILITY AS TO INSTALLATION OR OPERATION OF SUCH EQUIPMENT OR MATERIALS.					
REV.	DATE	DESCRIPTION	DWN	CHK	APPR



PLAN VIEW



FRONT VIEW



SIDE VIEW

CB NEBRASKA BOILER
The power of commitment.

ELEVATED DRUM ARRANGEMENT SERIES:
NB-ED-120 W/ECON (AL-HM)

LAYOUT DRAWING FOR
300,000 TO 450,000 LB./HR.
SATURATED STEAM

SCALE: NONE	DATE: MAY 10, 2007
DRAWN BY: KENB	CHECKED:
JOB NO: PROPOSAL	SERIAL NO:
QTY:	DRAWING NO: NB-ED-120