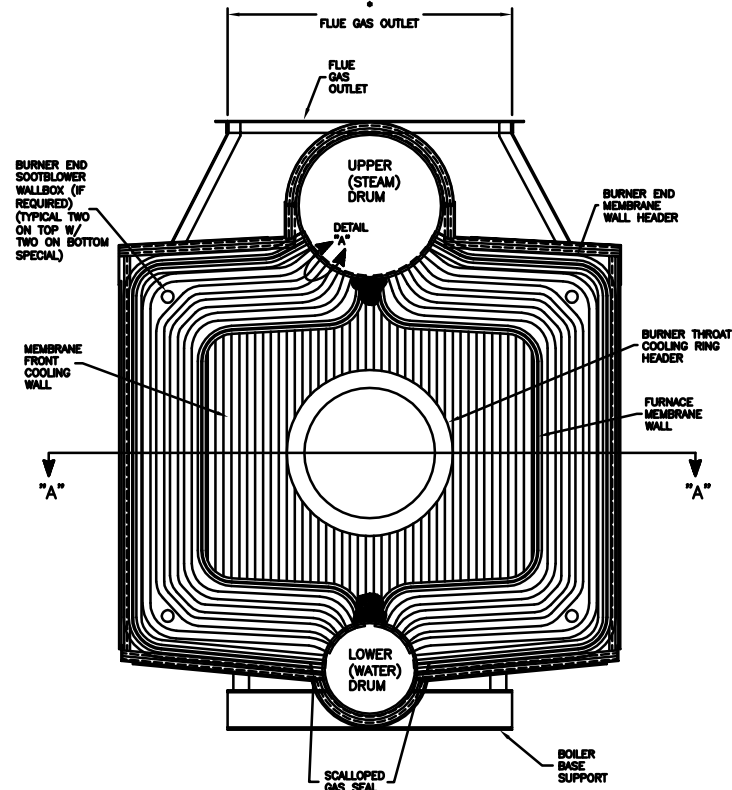
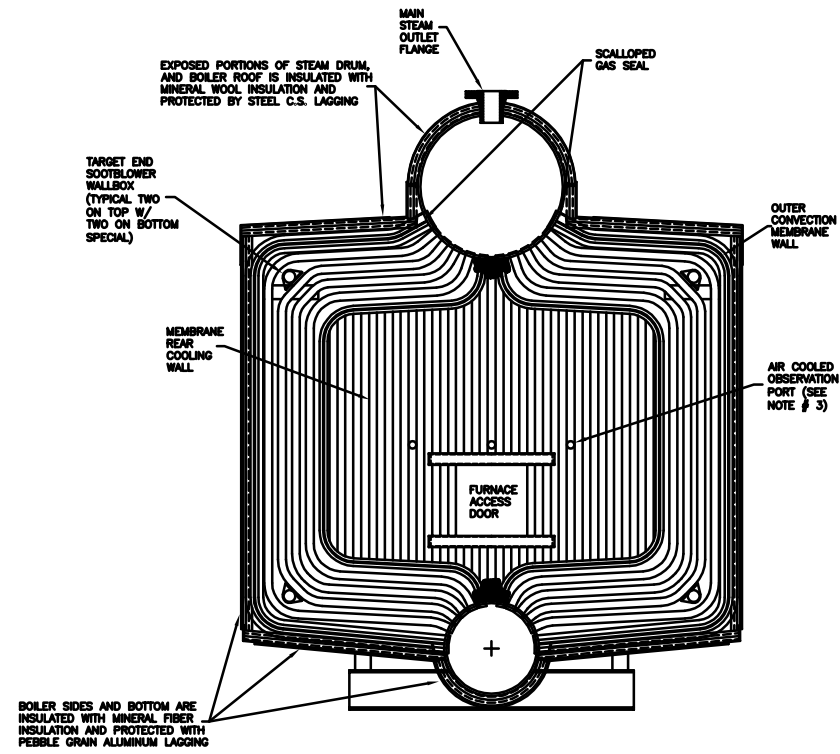


DO NOT SCALE - USE DIMENSIONS ONLY  
 DO NOT USE FOR CONSTRUCTION UNLESS APPROVED BELOW  
 THIS DRAWING IS THE PROPERTY OF NEBRASKA BOILER AND IS LOANED ON CONDITION THAT IT SHALL NOT BE COPIED OR REPRODUCED IN WHOLE OR IN PART OR DISCLOSED TO ANY THIRD PARTY OR USED IN ANY WAY WITHOUT THE WRITTEN CONSENT OF CB NEBRASKA BOILER. ANY EQUIPMENT OR MATERIAL SHOWN, BUT NOT FURNISHED BY CB NEBRASKA BOILER, IS FOR ILLUSTRATING THE APPLICATION, AND CB NEBRASKA BOILER ACCEPTS NO RESPONSIBILITY AS TO INSTALLATION OR OPERATION OF SUCH EQUIPMENT OR MATERIALS.

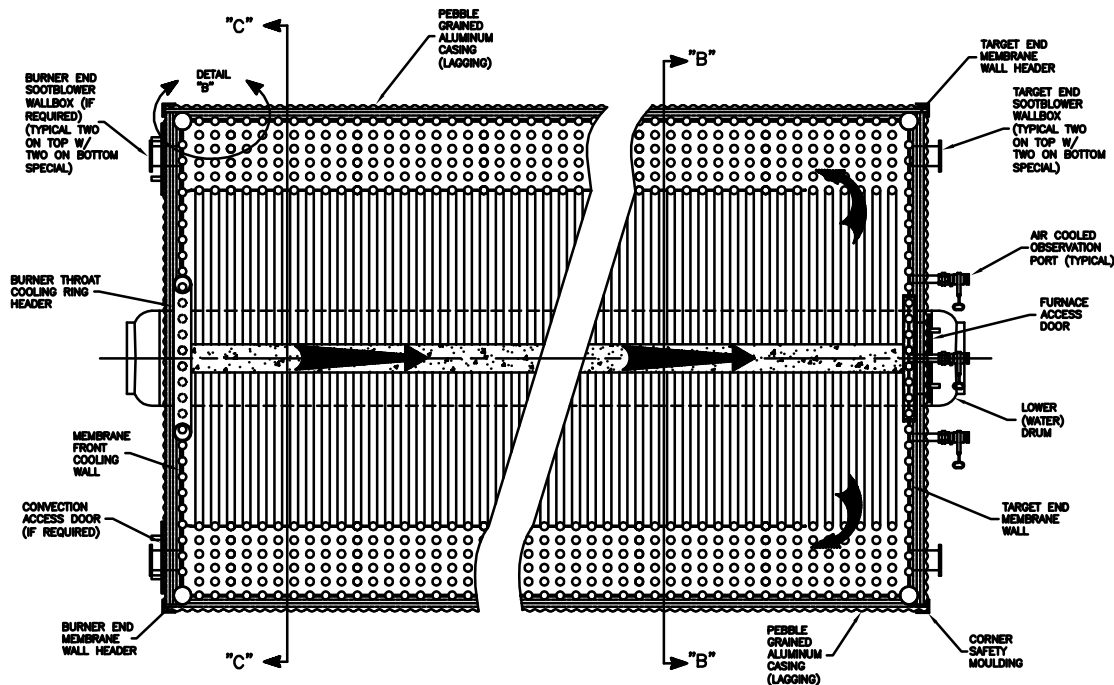
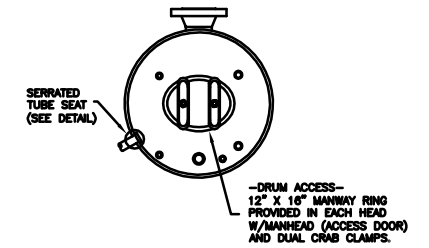
REV.	DATE	DESCRIPTION	DWN	CHK	APPR



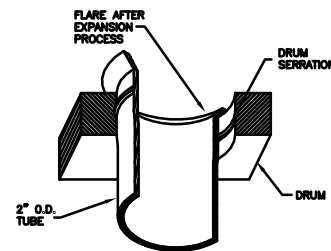
VERTICAL SECTION "C"-  
 BURNER ENDWALL AS  
 VIEWED FROM INSIDE



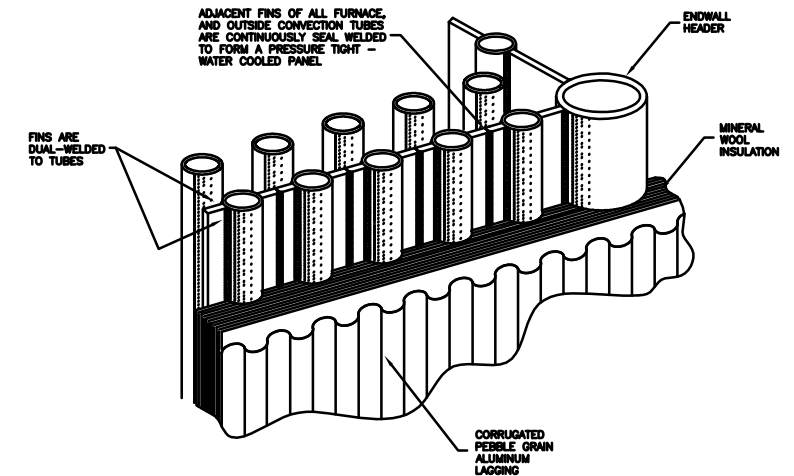
VERTICAL SECTION "B"-  
 CONVECTION TUBES ONLY



HORIZONTAL SECTION "A"-  
 "A"



DETAIL "A"  
 TUBE TO DRUM  
 INSTALLATION



DETAIL "B"  
 WELDED WALL CONSTRUCTION  
 W/Header Endwall Unit

NOTES:

1. BOILER CONSTRUCTION IS PER THE LATEST EDITION OF THE A.S.M.E. POWER BOILER CODE.
2. EXTERIOR OF DRUMS AND TUBES IS COVERED W/3" OF FIBER INSULATION AND PROTECTED BY AN OUTER CASING.
3. NUMBER, SIZING, AND LOCATION OF OBSERVATION PORTS IS TO BE DETERMINED.
4. \* - DENOTES TO BE DETERMINED.

"THIS DRAWING IS A REPRESENTATION OF VARIOUS MODELS OF THE CB NEBRASKA BOILER "O" TYPE CONSTRUCTION WITH ALUMINUM CASING. NUMBERS AND SPACING OF TUBES, OBSERVATION PORTS, AND BURNER OPENINGS WILL VARY." THIS DRAWING IS A PICTORIAL VIEW FOR CUSTOMER CONVENIENCE AND INFORMATION. SOME RECENT MANUFACTURING ADVANCES MAY NOT BE SHOWN.

**CB NEBRASKA BOILER**  
*The power of commitment.*

BOILER CONSTRUCTION SERIES:  
 "O" TYPE W/HEADER REAR WALL AND  
 HEADER WITH BURNER COOLING RING FRONT WALL

-ALUMINUM CASING-

SCALE: NONE	DATE: FEBRUARY, 2007
DRAWN BY: KENB	CHECKED:
JOB NO: PROPOSAL	SERIAL NO:
QTY:	DRAWING NO: ALUM-O-HDR